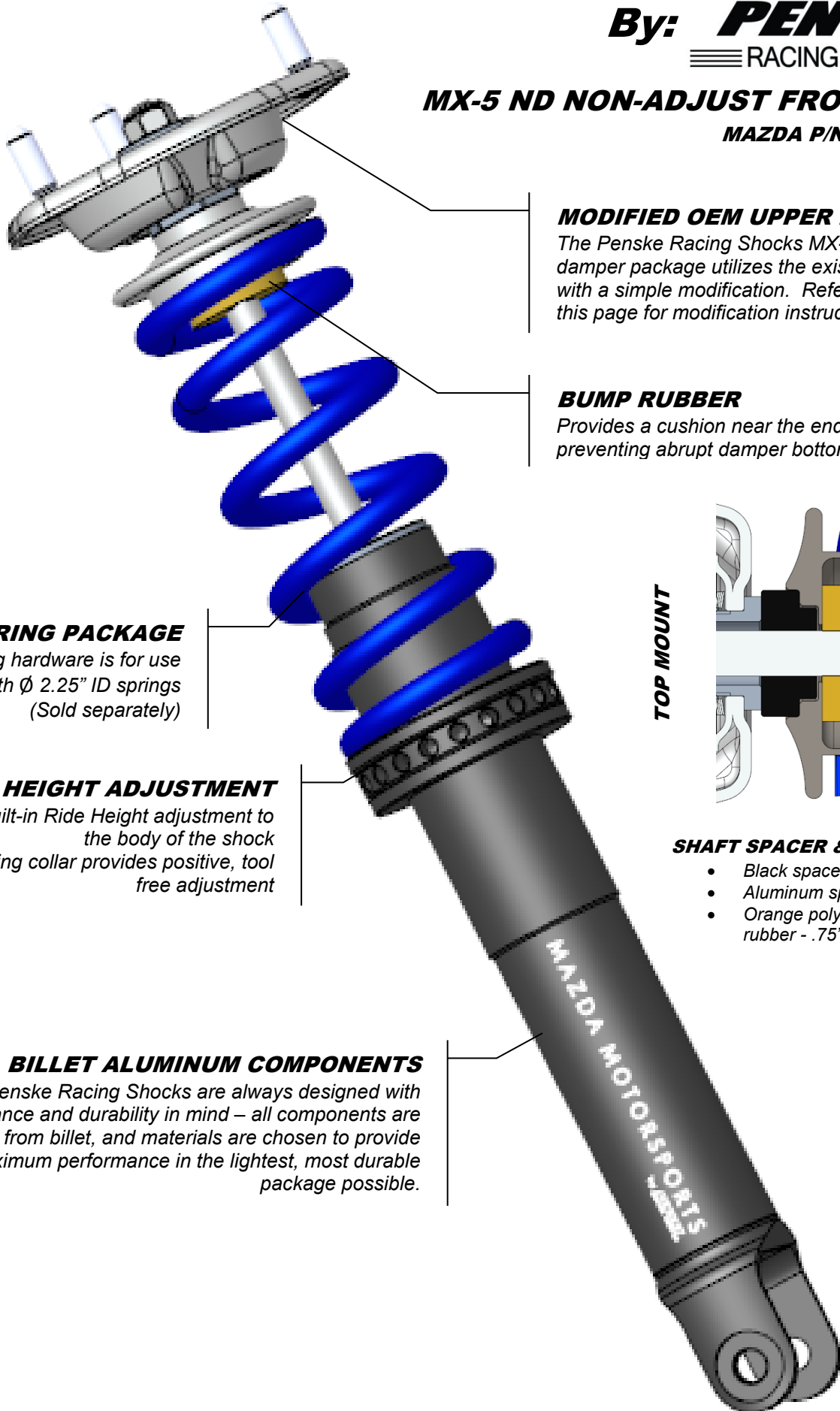


MAZDA MOTORSPORTS

By: **PENSKE**
RACING SHOCKS

MX-5 ND NON-ADJUST FRONT SHOCK

MAZDA P/N: 0000-04-5650



MODIFIED OEM UPPER MOUNT

The Penske Racing Shocks MX-5 ND Non-adjust damper package utilizes the existing upper mount with a simple modification. Reference the back of this page for modification instructions.

BUMP RUBBER

Provides a cushion near the end of stroke, preventing abrupt damper bottoming.

SPRING PACKAGE

Spring hardware is for use with \varnothing 2.25" ID springs (Sold separately)

RIDE HEIGHT ADJUSTMENT

Provides built-in Ride Height adjustment to the body of the shock
Knurled locking collar provides positive, tool free adjustment

BILLET ALUMINUM COMPONENTS

Penske Racing Shocks are always designed with performance and durability in mind – all components are machined from billet, and materials are chosen to provide maximum performance in the lightest, most durable package possible.

TOP MOUNT

SHOCK BODY

SHAFT SPACER & BUMP RUBBER:

- Black spacer, oriented as shown
- Aluminum spring seat
- Orange polyurethane bump rubber - .75" long

MAZDA MOTORSPORTS

By: **PENSKE**

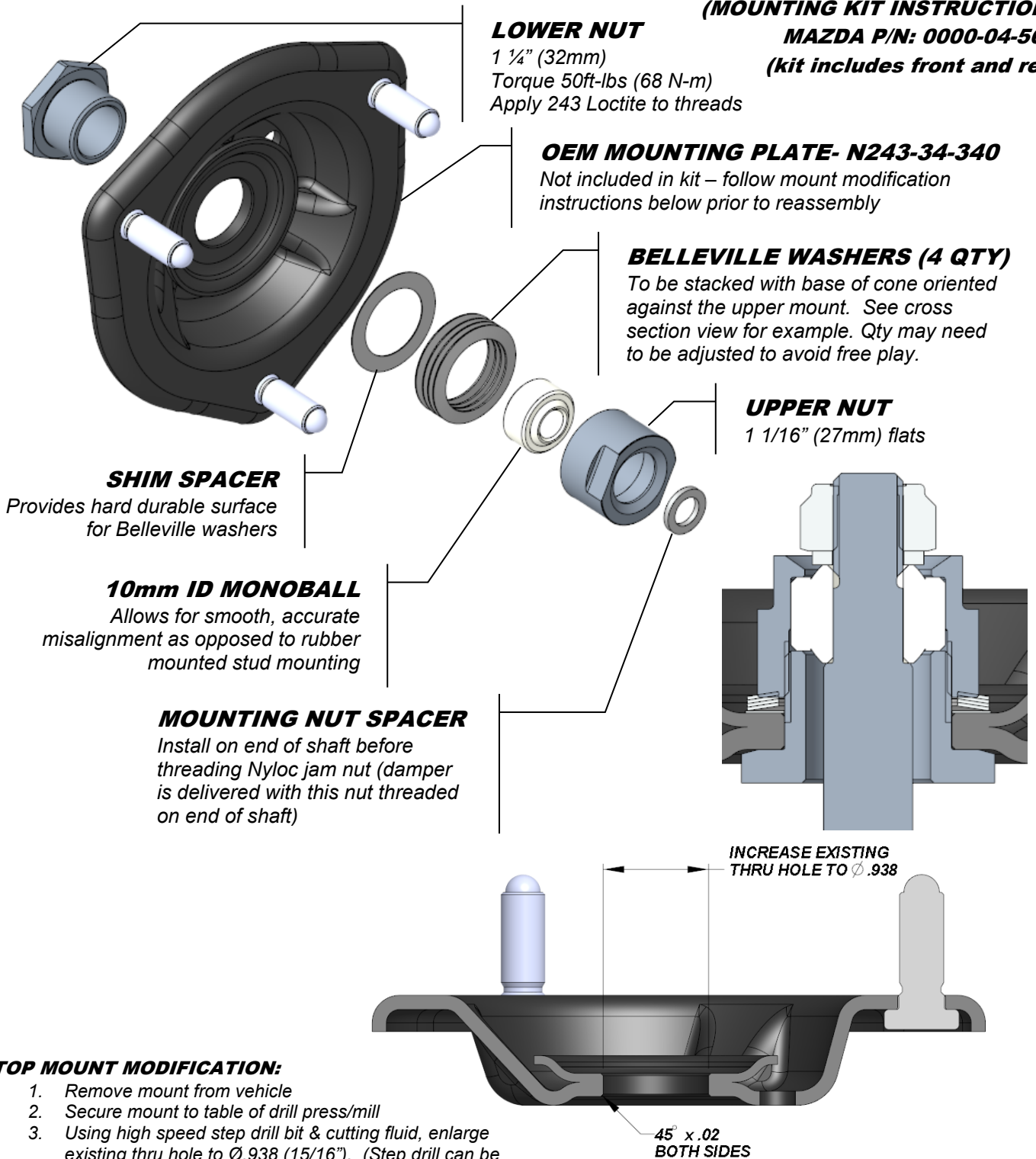
≡≡≡ RACING SHOCKS ≡≡≡

MX-5 ND NON-ADJUST FRONT SHOCK

(MOUNTING KIT INSTRUCTIONS)

MAZDA P/N: 0000-04-5677

(kit includes front and rear)



TOP MOUNT MODIFICATION:

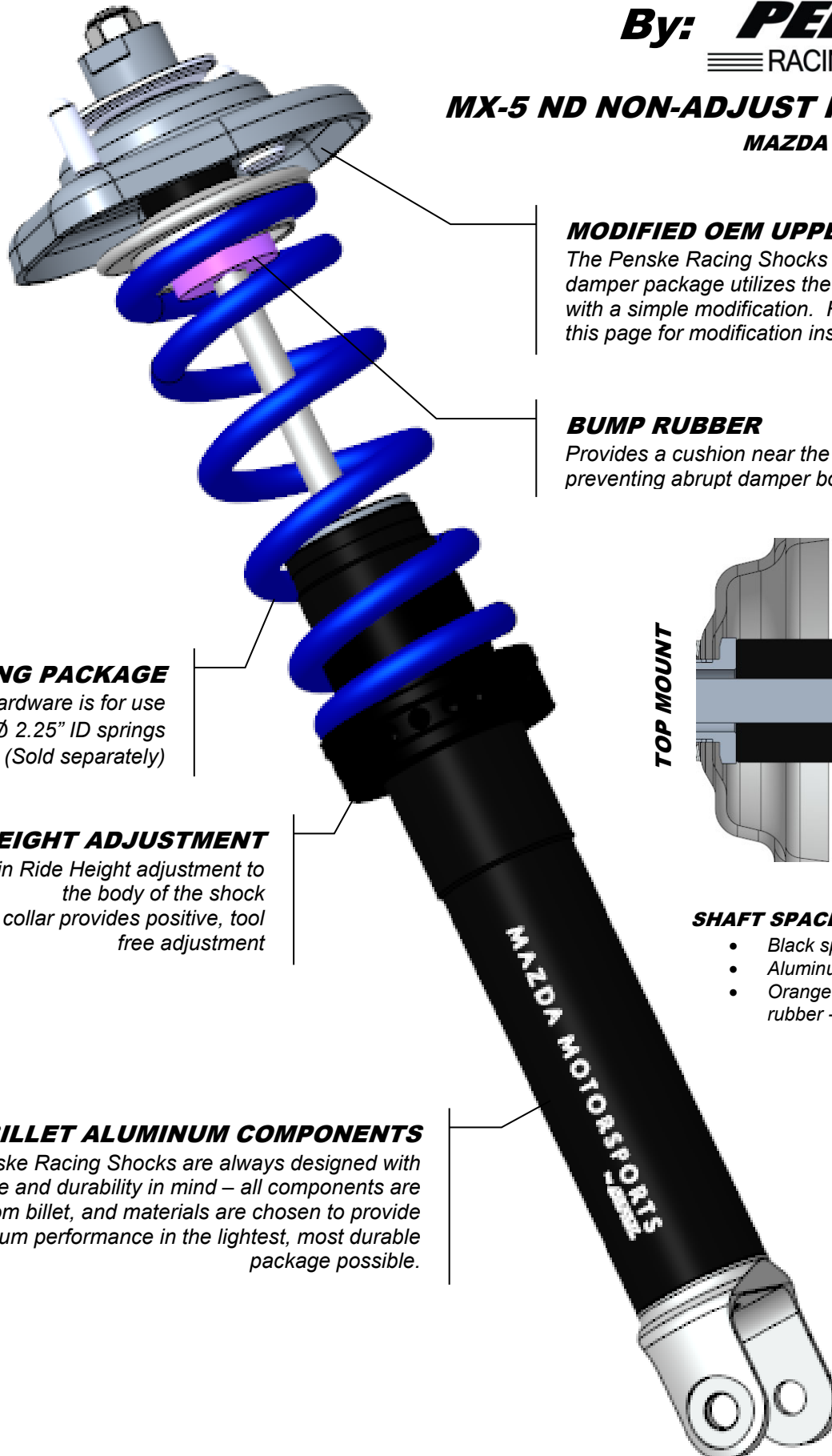
1. Remove mount from vehicle
2. Secure mount to table of drill press/mill
3. Using high speed step drill bit & cutting fluid, enlarge existing thru hole to \varnothing .938 (15/16"). (Step drill can be purchased from any industrial supplier such as McMaster-Carr, MSC, Grainger, etc.)
4. Chamfer/deburr hole edges
5. Assemble mounting components as specified above
6. Re-install into vehicle

MAZDA MOTORSPORTS

By: **PENSKE**
RACING SHOCKS

MX-5 ND NON-ADJUST REAR SHOCK

MAZDA P/N: 0000-04-5660



MODIFIED OEM UPPER MOUNT

The Penske Racing Shocks MX-5 ND Non-adjust damper package utilizes the existing upper mount with a simple modification. Reference the back of this page for modification instructions.

BUMP RUBBER

Provides a cushion near the end of stroke, preventing abrupt damper bottoming.

SPRING PACKAGE

Spring hardware is for use with \varnothing 2.25" ID springs (Sold separately)

RIDE HEIGHT ADJUSTMENT

Provides built-in Ride Height adjustment to the body of the shock
Knurled locking collar provides positive, tool free adjustment

BILLET ALUMINUM COMPONENTS

Penske Racing Shocks are always designed with performance and durability in mind – all components are machined from billet, and materials are chosen to provide maximum performance in the lightest, most durable package possible.

TOP MOUNT

SHOCK BODY

SHAFT SPACER & BUMP RUBBER:

- Black spacer, oriented as shown
- Aluminum spring seat
- Orange polyurethane bump rubber - .75" long

MAZDA MOTORSPORTS

By: **PENSKE**

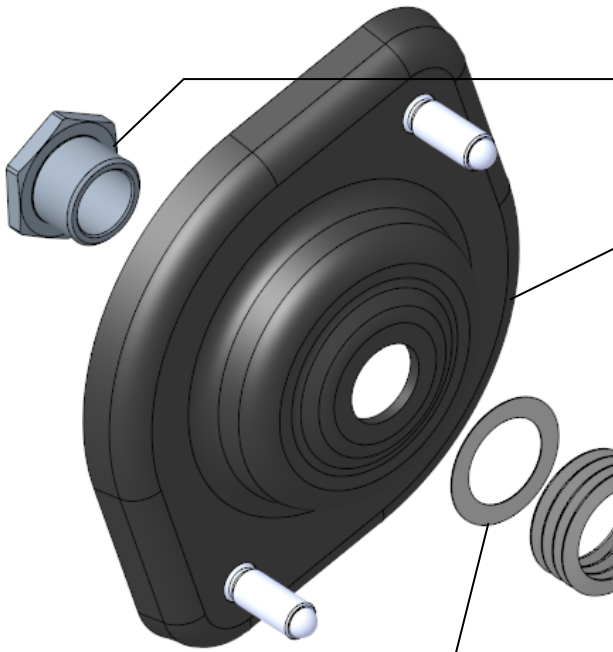
≡ RACING SHOCKS ≡

MX-5 ND NON-ADJUST REAR SHOCK

(MOUNTING KIT INSTRUCTIONS)

MAZDA P/N: 0000-04-5677

(kit includes front and rear)



LOWER NUT

1 1/4" (32mm)
Torque 50ft-lbs (68 N-m)
Apply 243 Loctite to threads

OEM MOUNTING PLATE- N243-28-340A

Not included in kit – follow mount modification instructions below prior to reassembly

BELLEVILLE WASHERS (4 QTY)

To be stacked with base of cone oriented against the upper mount. See cross section view for example. Qty may need to be adjusted to avoid free play.

UPPER NUT

1 1/16" (27mm) flats

SHIM SPACER

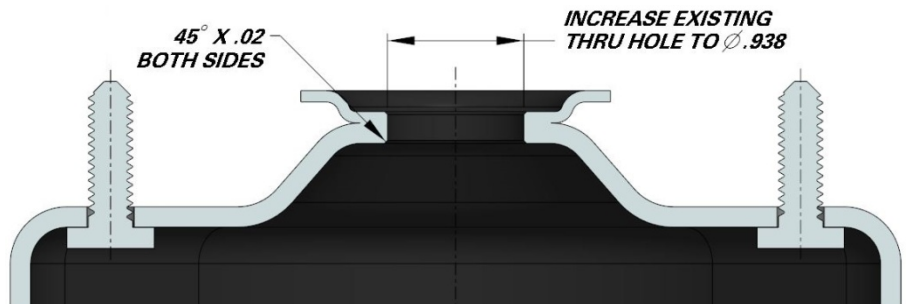
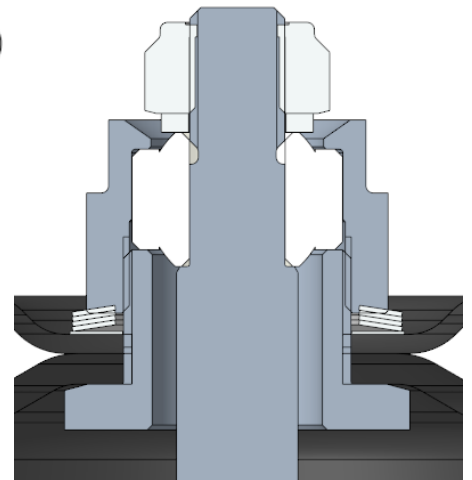
Provides hard durable surface for Belleville washers

10mm ID MONOBALL

Allows for smooth, accurate misalignment as opposed to rubber mounted stud mounting

MOUNTING NUT SPACER

Install on end of shaft before threading Nyloc jam nut (damper is delivered with this nut threaded on end of shaft)



TOP MOUNT MODIFICATION:

7. Remove mount from vehicle
8. Secure mount to table of drill press/mill
9. Using high speed step drill bit & cutting fluid, enlarge existing thru hole to $\varnothing.938$ (15/16"). (Step drill can be purchased from any industrial supplier such as McMaster-Carr, MSC, Grainger, etc.)
10. Chamfer/deburr hole edges
11. Assemble mounting components as specified above
12. Re-install into vehicle

PENSKE

≡ RACING SHOCKS ≡

150 FRANKLIN ST • P.O. BOX 1056
READING, PA 19602
(610) 375-6180 • (610) 375-6190 FAX