



Mazda's Focus | Parts Spotlights Multi-Models | Parts Spotlights Miata | Parts Spotlights Rotary | Price Reductions: 2018-2019

Mazda Motorsports' Competition Parts Program November 7, 2019



Table of Contents

Focus.....	3-9
Parts Spotlights Multi-Models.....	10-23
Parts Spotlights Miata.....	24-54
Parts Spotlights Rotary.....	55
Price Reductions: 2018-2019.....	56-64



Our Focus

Our customer-centric approach is simple: Our focus is our customer - long after becoming one

The five key areas that Mazda is known by:

- Human Centricity
- Artful Design
- Ingenious Solutions
- Effortless Joyful Driving
- Japanese Mastery



Our Team

Scott Kaluza	Competition Parts Manager	skaluza@mazdausa.com
James Painter	Specialist, Customer Support	jpainte5@mazdausa.com
Dan Sumner	Specialist, Customer Support	dsumner1@mazdausa.com
Josh Smith	Specialist, Technical Development	jsmit295@mazdausa.com
Richard Conley	Data Analyst	rconley3@mazdausa.com
David Cook	Business Development Manager	dcook13@mazdausa.com
Jonathan Applegate	Program Manager	jappleg2@mazdausa.com



Mazda Motorsports in 2018: Grassroots Racing

Brand Value Management Strategic & Tactical Changes

- Hired new team member – Josh Smith – technical specialist
- Added many competition parts to all five U.S. parts distribution centers. (Mazda will continue to measure and adjust.)
- Extended Mazda Motorsports' parts and technical support (800.435.2508) hours
 - Was: 7:00 am – 3:00 pm PT; closed from noon to 1:00 pm
 - Became: 6:30 am – 3:30 pm PT (includes noon to 1:00 pm)
- Paid deeper in contingency awards (e.g., many classes now pay down to 5th place; some deeper)
- Included free UPS ground shipping on qualified orders
- Ran four-day damper test, selecting Penske Racing Shocks for Spec Miata
- Enhanced trackside support at annual championship events (e.g., hospitality at Solo Nationals and Runoffs)
- Launched trackside support program at several SCCA Majors and Super Tour events
- Worked with Mazda OEM colleagues to reduce prices of many stock parts to better support Mazda racers
- Wrote ~20 prep shop profiles to highlight our Mazda shops who work tirelessly to support the racers
- Launched GT3 Challenge presented by MPI
- Partnered with Spec MX-5 Challenge series
- Introduced The Mazda Collection - Mazda apparel and accessories



Mazda Motorsports in 2019: Grassroots Racing

Brand Value Management Strategic & Tactical Changes

- Added contingency awards for endurance racing (i.e. AER, WRL, ChampCar) and Penske Racing Shocks bonus starting in 2019
- Supplemented contingency offerings (i.e. bonuses) for NC Miata and endurance racers via points for parts, apparel & accessories
- Established contingency search webpage for racers to be able to search contingency awards payout status (see bottom of page)
- Announced new contingency awards for the 2020 season
- Created Prep Shop Rewards Program for any prep shop that meets the qualifications
- Extended free UPS ground shipping with adjustments
- Added requisition lists to each Mazda Team Support members parts store for more efficient ordering
- Created this parts catalogue as we continue working to upgrade the parts store
- Went to market with the ND2 (2018-on) Global MX-5 Cup cars
- Developed Spec MX-5 - NC MX-5 (2006-2015) for club racing
- Debuted Mazda3 TCR car
- Expanded reach of trackside support program
- Expanded support at Solo Nationals and SCCA Runoffs



Spec MX-5: Club Racing Done Right



For all your Spec MX-5 news and information:
visit SpecMX-5.com and see the PDF located [here](#)

Learn about:

- The car, which competes in:
 - Spec MX-5 Challenge (hosts the spec races in 2020)
 - SCCA STL
 - NASA ST5
 - WRL, AER, ChampCar
- The four pillars it's based on: affordability, reliability, tech-ability, and really fun to drive
- 6-figure contingency awards
- Mazda Motorsports' most significant price discounts on the build/conversions & ongoing parts orders
- And more



Free UPS Ground Shipping



FREE UPS GROUND SHIPPING ON
ORDERS OF \$1,200 OR MORE



MARCH 1, 2019 -
JANUARY 31, 2020

Offer applies to Standard Shipping only (not to orders requiring freight delivery)
Valid only on orders shipped within the Continental 48 U.S. States

Offer valid online or via phone

Terms and conditions of this offer are subject to change



Trackside Support Program Based on the East Coast

Purpose:

- To better understand our customers in order to support the entire Mazda Team Support Program, resulting in:
 - Reduced price of many parts; new parts offerings (many highlighted on following pages); improvements to [Mazda's contingency awards program](#)
- To support racers with parts needs at events, assisting many racers with staying on track
- To offer in-person technical support (added Mazda diagnostic scan-tool)
- To assist Mazda racers by offering pro driver coaching at select events (e.g., [Tom Long](#) & [Andrew Carbonell](#))

2019 Events:

January:	SCCA Majors – Homestead; SCCA Super Tour – Sebring	July:	SCCA Super Tour - Laguna Seca (no parts trucks)
March:	SCCA Super Tour - Road Atlanta	Sept.:	NASA Championships - Mid-Ohio
April:	SCCA Super Tour - VIRginia International Raceway	October:	SCCA Runoffs – VIRginia International Raceway
June:	SCCA Super Tour - Road America	TBA:	Mazda Road to 24 Shootout - \$100K valued scholarship

2020 Events TBA



Parts Spotlights Found Online:

MazdaMotorsports.com > Behind the Zoom > **Parts Spotlights**

Prices, inventory, and distribution center locations are subject to change



Battery Tender® Chargers

Battery Tender® Power Tender Plus

High Efficiency

- 12V @ 5.0A
- Part #: 0000-10-9250
- Price: \$59.99

Battery Tender® Plus High Efficiency

- 12V @ 1.25A
- Part #: 0000-10-9251
- Price: \$49.90





Mazda Branded Canopy

Frame Part #: 0000-10-CNPY-FR

Top/Ropes Part #: 0000-10-CNPY-TP

Total Price: \$694.00

Warehouse location: Calif.

Features:

- 10' X 10'
- Lightweight (38lbs)
- Strong hexagonal frame



*Reminder: Any Spec MX-5 competition part, if included in build or conversion kit, receive 20% off; most stock parts receive 25% off in kit



AiM Sports Products



Solo 2/Solo 2 DL

The brand new GPS lap timers for motorsports

SOLO
Part #: 0000-10-9301
Price: \$349.00

SOLO DL
Part #: 0000-10-9302
Price: \$500.00

SOLO 2 DL
Part #: 0000-10-9312
Price: \$699.00

SMARTYCAM HD
Part #: 0000-10-9310
Price: \$999.00

MXL2 PISTA
Part #: 0000-10-9303
Price: \$1998.00

MXm DASH
Part #: 0000-10-9311
Price: \$1,099.00

Pump Control Harness
Part #: 0000-10-9304
Price: \$386.00

Patch Cable Harness
Part #: 0000-10-9305
Price: \$34.00

Temp Sensor
Part #: 0000-10-9306
Price: \$53.00

Pressure Sensor
Part #: 0000-10-9307
Price: \$159.00

Warehouse: Calif.

*Any Spec MX-5 competition part, if included in build or conversion kit, receives 20% off; most stock parts receive 25% off in kit



Stainless Brake Line Kits

Braided stainless steel lines are more protected from abrasion and don't expand under pressure

Stainless Braided Brake and Clutch Lines				
Part #	Description Generated 6-6-19	Model	Year	Racer Price Generated 6-6-19
0000-03-5211	Goodridge G-Stop Brake Line Kit	Miata 1.6 & 1.8L	1990-2005	\$ 120.00
0000-03-5212	Goodridge G-Stop Brake Line Kit	MX-5	2006-2015	\$ 119.90
0000-02-5601	Goodridge G-Stop Brake Line Kit	Miata 1.6 & 1.8L	1990-2005	\$ 17.95
0000-03-7217	Goodridge G-Stop Brake Line Kit	RX-7 (5 Lug)	1986-1991	\$ 125.00
0000-03-7218	Goodridge G-Stop Brake Line Kit	RX-7	1993-1995	\$ 119.00
0000-03-8201	Goodridge G-Stop Brake Line Kit	RX-8	2004-2011	\$ 119.90
0000-03-2211-FT	Stop-Tech Front Brake Line Kit	Mazda2	2011-2014	\$ 57.90
0000-03-2211-RR	Stop-Tech Front Brake Line Kit	Mazda2	2011-2014	\$ 54.00
0000-03-3216	Goodridge G-Stop Brake Line Kit	Mazda3	2004-2013	\$ 125.00
Pricing is subject to change				



BrakeOMeter

Brake bias adjusters with a dial and detents make repeating your brake bias setting easy

Warehouse: Calif.

A16

- Part #: 0000-03-9103-16
- Price: \$224.95
- 3 inch diameter

F10

- Part #: 0000-03-9103-10
- Price: \$224.95
- 2.2 inch diameter





Mazda Steering Wheel by MPI

Developed by Max Papis Innovations

Part #: 0000-10-5650-MZ

Price: \$214.99

Warehouse: Calif.

[VIDEO](#) - Max Papis explains its features and benefits



*Reminder: Any Spec MX-5 competition part, if included in build or conversion kit, receive 20% off; most stock parts receive 25% off in kit



Halo Racing Seat by MPI

Two sizes: Regular and XL

Part # (regular size): 0000-10-5675

Part # (extra large): 0000-10-5675-XL

MSRP: \$699.99

Mazda Motorsports' Intro Price: \$549.00

Price if added into Spec MX-5 build or conversion kit
purchased from Mazda Motorsports by Jan 31, 2020: \$439.20

Available by November 2019

Warehouse: GA



*Any Spec MX-5 competition part, if included in build or conversion kit, receives 20% off; most stock parts receive 25% off in kit



GoPro

Category / Product Description

**Mazda Part
Number****Go Pro Part
Number****Retail
Price****Racer
Price**

Premium Accessories

Battery BacPac Limited Edition (includes free Dive Housing for HERO3+ compatibility)

0000-10-9150

ABPAK-304

49.99

44.99

LCD Touch BacPac Limited Edition (includes free Dive Housing for HERO3+ compatibility)

0000-10-9151

ALCDB-304

79.99

63.50

Category / Product Description

**Mazda Part
Number****Go Pro Part
Number****Retail
Price****Racer
Price**

Mounting Accessories

Flat + Curved Adhesive Mounts

0000-10-9160

AACFT-001

19.99

11.50

Front Mount

0000-10-9161

AHFMT-001

12.99

11.69

Side Mount

0000-10-9162

AHEDM-001

12.99

7.50

Roll Bar Mount

0000-10-9163

GRBM30

29.99

17.50

Suction Cup Mount

0000-10-9164

AUCMT-302

39.99

23.00

Jaws Flex Clamp Mount

0000-10-9165

ACMPM-001

49.99

29.00

Camera Tethers

0000-10-9166

ATBKT-005

19.99

11.50

Category / Product Description

**Mazda Part
Number****Go Pro Part
Number****Retail
Price****Racer
Price**

Other Accessories

Standard Housing (HERO3/HERO3+ only)

0000-10-9170

AHSRH-301

49.99

29.00

Standard Housing Lens Replacement Kit (HERO3/HERO3+ only)

0000-10-9171

ASLRK-301

19.99

11.50

Protective Lens + Covers (HERO3/HERO3+ only)

0000-10-9172

ALCAK-302

19.99

11.50

Auto Charger

0000-10-9180

ACARC-001

29.99

26.99

Rechargeable Battery (HERO3/HERO3+ only)

0000-10-9181

AHDBT-302

19.99

17.99

Lexar SD Card 32GB - Class 10 (HERO3/HERO3+ only)

0000-10-9185

AMSDC-332

49.99

42.50

Lexar SD Card 64GB - Class 10 (HERO3/HERO3+ only)

0000-10-9186

AMSDC-364

79.99

67.00



RX-8 Rear Hub Kit

NC MX-5 upgrade (third gen)

Racer Price: \$2,115.32

Part #	Description	Qty
F151-26-11XA	(R) Hub support	1
F151-26-12XA	(L) Hub support	1
F151-26-241A	Rear axle flange	2
F151-26-151	Wheel bearing	2
GE4T-33-048	Ring	2
MA01-25-50XA	(R) Axle	1
MA01-25-60XA	(L) Axle	1





The Finishing Touches

Kevlar Door Release

Part #: 0000-07-5311-MC

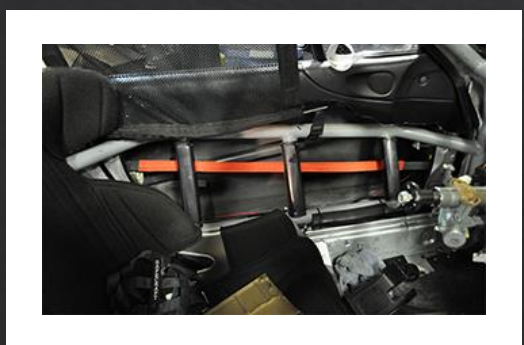
Price: \$125.00



Rearview Mirror Extension Mounts

Part #: 0000-07-5312-MC

Price: \$35.00



Window Clips

Part #: 0000-07-5300-MC

Price: \$35.00



Wheel Studs & Lug Nuts

Wheel stud kit (pack of four)*

Part #: 0000-04-5905

Price: \$68.65

Applications include:

- NA (1990-1993) 1.6L Miata front & rear
- NA/NB (1994-2005) 1.8L Miata front
- NC (2006-2015) Miata front & rear
- ND (2016-present) Miata front & rear
- Mazda2 (all years) front & rear
- Mazda3 (all years) front & rear
- RX-8 (all years) front & rear



Lug nut kit (pack of four)*

Part #: 0000-04-5906

Price: \$27.20

Lug nut 12 X 1.5MM, 17mm hex, 60 deg seat, coated finish

Applications:

- MSI stud – all
- Any 12 X 1.5mm stud

ARP Wheel Stud Kits				
Model	Years	Mazda Part #	Description	Racer Price
Miata 1.6L & 1.8L	1990-2005	0000-04-5719	Fits front only (and a 1.6L rear if original equipment hub); 4 studs per kit (would need to order four of these kits for the car) Stud length: 2.75"; knurl length: 0.335"; nose length: 0.350";	\$ 25.72
Miata 1.8L	1994-2005	0000-04-5720	Fits rear only; 4 studs per kit (would need two kits for the rears of the 1.8L Miata) Stud length: 2.75"; knurl length: 0.300"; nose length: 0.350"; diameter/pitch: M12 x 1.5; knurl diameter: 0.579"	\$ 25.50
MX-5 Miata/RX-8	2006-2015/ 2006-2012	0000-04-5903	Fits front & rear; 5 studs per kit (would need four of these kits for the car) Stud length: 3.25"; knurl length: 0.315"; nose length: 0.350"; diameter/pitch: M12 x 1.5; knurl diameter: 0.509"	\$ 30.25
MX-5 Miata/RX-8	2006-2015/ 2006-2012	0000-04-5904	Fits front & rear; 5 studs per kit (would need four of these kits for the car) Stud length: 2.50"; knurl length: 0.315"; nose length: 0.350"; diameter/pitch: M12 x 1.5; knurl diameter: 0.509"	\$ 30.25



*Any Spec MX-5 competition part, if included in build or conversion kit, receives 20% off; most stock parts receive 25% off in kit



Offset Bushings: NC & ND Miatas, and RX-8

To gain more negative camber

Steel lower, front offset bushings for all NC (2006-2015) MX-5 & all RX-8s (2004-2011)

Part #: 0000-04-5407-NC for the 2006-2015 MX-5 & 2009-2011 RX-8

Part #: 0000-04-5407-R1 for the 2004-2008 RX-8

Price (each): \$75.00

Delrin Bushings for all (2004-2011) RX-8 & all NC Miata Front Upper Control Arm

Part #: 0000-04-5420

Price: \$86.80

Delrin Bushings for all ND (2016-2019) Miatas Front Upper Control Arm

Part #: 0000-04-5421

Price: \$298.00

Warehouse: Calif.



NC Miata & MAZDASPEED3 Brake Duct Kits



Brake Duct Kits

Model	Year	Mazda Part #	Description	Price (Ea)
MX-5 Miata	2006-2014	0000-03-5301	Kit, Front Brake Duct (Caliper)	\$260.74
MX-5 Miata	2009-2012	0000-07-5805	Kit, Fog Light/Brake Duct Opening	\$195.00
MAZDASPEED3	2010-2013	0000-03-3302	Kit, Front Brake Duct Kit (Caliper)	\$589.00



Prather (JPM) NA & NB Coilover Shock Kit

Part # 0000-04-5229

Price: \$2,749.00

Features:

- AFCO aluminum threaded coil over shock
- Double adjustable - rebound and compression knobs for easy adjustment (30 positions)
- Custom, progressive valve tuning specific to the Mazda Miata (1990-2005); wide range of adjustment
- Rebuildable
- Eibach ERS springs installed (2.5" ID, 7' free length)
- Shock package is for all 1990-2005 Mazda Miata's, weighing between 2000-2600lb
- Bolts to OEM control arms
- Spherical upper and lower bearing mounts
- Front shocks handle between 500-900lb spring rates; rear: 300-600lb
- AFCO Shocks/Eibach springs/mounts are pre-assembled, ready to mount
- Suitable for many classes on different tire packages (DOT, slick, radial or bias-ply)





NA & NB Miata Oil Pan Baffle by JPM

Not Legal for Spec Miata

Part #: 0000-01-5311

Price: \$39.99

It's a laser-cut piece that goes into a stock Miata oil pan," Jesse Prather explains. "It goes underneath the stock baffle plates to help keep the oil down near the oil pump pickup in high-g-load corners. The whole idea is to keep the oil from sloshing away from that pickup. That plate helps keep the oil in the bottom of the oil pan. It's very important for any wet-sump engine – every motor I do gets one, and I've sold tons of them."



NA & NB Miata Crankshaft Damper by JPM

Part #: 0000-01-5220

Price: \$850.00

Crankshaft damper from Jesse Prather Motorsports integrates the timing belt gear and works with both dry and wet sump applications





NA & NB Miata Steel Flywheel by JPM

Part # 0000-02-5214

Price: \$795.00

- 7.5lb, durable billet steel
- Compatible with 5.5-inch double disc racing clutches. (See Quarter Master and Tilton clutch components table below)
- Fits all 1.6L & 1.8L Mazda Miata engines 1990-2005
- Designed for SCCA Production Class use, but suitable for any class that allows alternate 5.5-inch flywheels and clutches



5.5" CLUTCH ASSEMBLIES COMPATIBLE WITH JPM MIATA FLYWHEEL

MANUFACTURER	PART NUMBER	DESCRIPTION	NOTES
QUARTER MASTER CLUTCHES	0000-02-9103	5.5" CLUTCH UNIT	INCLUDES CLUTCH COVER, PRESSURE PLATE, HOUSING, FLOATER PLATE AND 2 DISC CLUTCH PACK. FOR TRANSMISSIONS WITH A SPLINE SIZE OF 1" X 22.
	0000-02-9128	BOLT KIT	CLUTCH TO FLYWHEEL.
TILTON CLUTCHES	0000-02-9103-TL	5.5" CLUTCH UNIT	ORDER CLUTCH PACK SEPERATELY
	0000-02-9121-TL	5.5" CLUTCH PACK	FOR TRANSMISSIONS WITH A SPLINE SIZE OF 1" X 22.
	0000-02-5113-TL	BOLT KIT	CLUTCH TO FLYWHEEL.
MAZDA	B622-16-510	RELEASE BEARING	1990-2005 MIATA
MAZDASPEED OFFERS REPLACEMENT PARTS FOR QUARTER MASTER AND TILTON CLUTCHES.			



NA & NB Miata Tow Hook Set

Front and rear

NA Miata (1990-'97) - both 1.6- and 1.8-liter engines

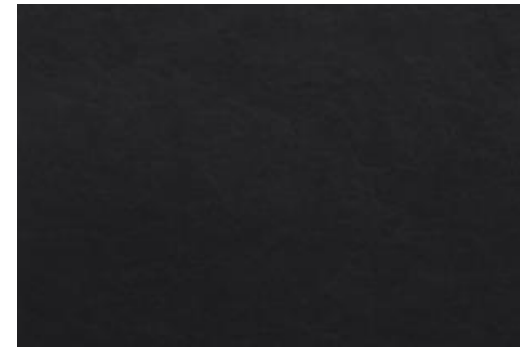
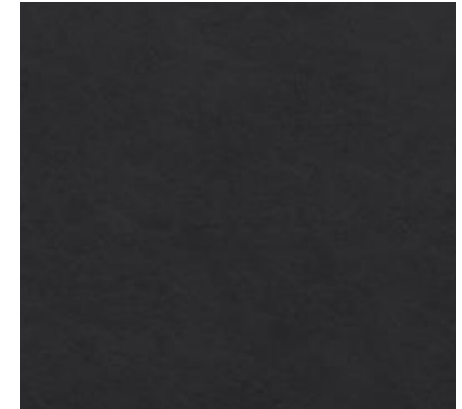
Part #: 0000-04-5998

Price: \$46.90

NB Miata (1999-2005)

Part #: 0000-04-5990

Price: \$44.50





NA & NB Miata Offset Bushings

Spec Miata legal

Urethane Bushing Set

Part #: 0000-04-5409

Price: \$59.00

Delrin Bushing Set

Part #: 0000-04-5419

Price: \$98.00





Centric Brake Rotors

Centric C-Tek (Standard) Brake Rotors for MX-5 Miata

Year	Engine	Front Part #:	Price	Rear Part #:	Price
1990 – 1993	1.6 DOHC	0000-03-5401-21	\$17.75	0000-03-5411-21	\$14.50
1994 – 2005	1.8 DOHC	0000-03-5402-21	\$20.50	0000-03-5412-21	\$15.50
2006 – 2014	2.0 DOHC	0000-03-5404-21	\$34.13	0000-03-5414-21	\$23.01

Centric Premium (Endurance) Brake Rotors for MX-5 Miata

Year	Engine	Front Part #:	Price	Rear Part #:	Price
1990 – 1993	1.6 DOHC	0000-03-5401-20	\$28.41	0000-03-5411-20	\$20.25
1994 – 2005	1.8 DOHC	0000-03-5402-20	\$39.90	0000-03-5412-20	\$29.00

Mazda (OE) Brake Rotors for MX-5 Miata

Year	Engine	Front Part #:	Price	Rear Part #:	Price
1990 – 1993	1.6 DOHC	B25Y-33-25XB	Call*	NA01-26-251D	Call*
1994 – 2000	1.8 DOHC	N026-33-25XC	Call*	BB4C-26-251C	Call*
2006 – 2014	2.0 DOHC	N12Y-33-25XB	Call*	N123-26-251A	Call*



Centric C-Tek Rotors



Premium Brake Rotors

*Call 800.435.2508 for pricing (or Mazda team support program members can enter the part #s in their shopping cart for pricing)



NA & NB Miata Steering Rack Plugs & Steering Column Shaft Adapters

Steering Rack Plugs

'90-'97 Miata: Part #: 0000-04-5816; price: \$55.00

'99-'05 Miata: Part #: 0000-04-5818; price: \$55.00

Steering Column Shaft Adapter

Part #: 0000-10-5680-MC

Price: \$150.00

Steering Column Shaft Spacers

0.5in: Part #: 0000-10-5684-MC; price: \$45.00

2.5in: Part #: 0000-10-5683-MC; price: \$100.00

Quick Disconnect – Bolt On – 2.5in

Part No. 0000-10-5682-MC

Price: \$110.00





NA & NB Miata Heavy Duty Front Hubs

Front Hubs ('90-'05)

- Heavy Duty w/ Standard Length Wheel Studs (Non-ABS)
Part #: 0000-04-5HUB-01
Price: \$190.50
- Heavy Duty Enduro Spec With 2.25" ARP Wheel Studs (Non-ABS)
Part #: 0000-04-5HUB-S1
Price: \$223.50

Rear Hub Flanges / Bearings ('90-'05)

- Rear hub flange
Part #: B01A-33-060A
Call for price, or log-in
- Rear wheel bearing
Part #: B455-33-047D
Call for price, or log-in





NA & NB Miata Roller Bearing Hubs

Update Available January 2020





Spec Miata Suspension: Penske, Bilstein, Eibach

NA/NB Miata Penske Racing Shocks - *Not just for Spec Miata; Penske SM Prices Increase 5% Dec 1, 2019*

- One front Penske shock - Part #: 0000-04-5275 / price: \$198.74
- One rear Penske shock - Part #: 0000-04-5276 / price: \$198.74
- Penske mount kit (all four corners) - Part #: 0000-04-5277 / price: \$249.90
- Total Penske price: \$1,044.86



Penske features & benefits:

- Proper shock-body length
- Bump stop tailored to prevent continuous riding on it while reducing shock damage during an "off"
- Sealed, tamperproof with serial number
- Serviceable/rebuildable, exclusively by Penske Racing Shocks
- Meets the 5% manufacturer tolerance
- Replaced with a spherical mount on top & bottom
- Aluminum shock body allows for consistent temperature and enhanced dampening over time

Where can you run the Penske damper kit?

- SCCA
 - Autocross classes: Street, ST & SP
 - Club Racing: Spec Miata, T1, T2, T4, STL, STU, ITA, ITS
- NASA: Spec Miata, Super Touring, Time Trial
- American Endurance League
- ChampCar
- World Racing League
- Lucky Dog Racing
- And more

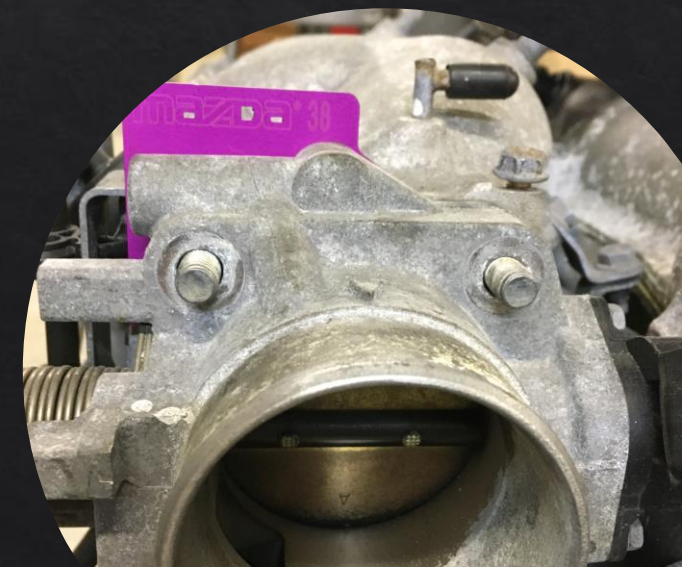


Spec Miata Restrictor Plates

Required for Spec Miata

Two sized plates for the NB Miata; each \$48.25:

- '99 -'00 (1.8L) – 38mm plate
- Part #: 0000-06-5238-99 (pictured in magenta)
- '01 -'05 (VVT 1.8L) – 40mm plate
- Part #: 0000-06-5240-01 (pictured in red/black)



Warehouses: GA & Calif.



NA & NB Miata Pauter Connecting Rods

Set of four rods

Part #: 0000-01-5230

Price: \$937.00 (per set of four rods)

For 1.6- and 1.8-liter Miata engines (1990-2005) is lighter than stock

- Weigh 455 grams each (with a variable of up to 10 grams per rod), compared to a stock rod at 534 grams
- Use the preferred 3/8-inch rod bolts, where many use 5/16-inch bolts



Mazda Signature Series Exhaust

NA & NB Miata's (first two gens)

Part #: 0000-06-5426-99 ('99-'05)

Part #: 0000-06-5425-18 ('94-'97)

Part #: 0000-06-5425-16 ('90-'93)

Price for each: \$340.00

Warehouses: GA & Calif.

About:

- Manufactured and developed by Kooks
- Exclusively sold by Mazda Motorsports
- Lightweight and quiet
- 409 stainless steel construction
- Compatible with drop floors
- Fits tunnel notch for wide seats
- Uses heavy-duty hangers





Part #: 0000-01-5503-CR

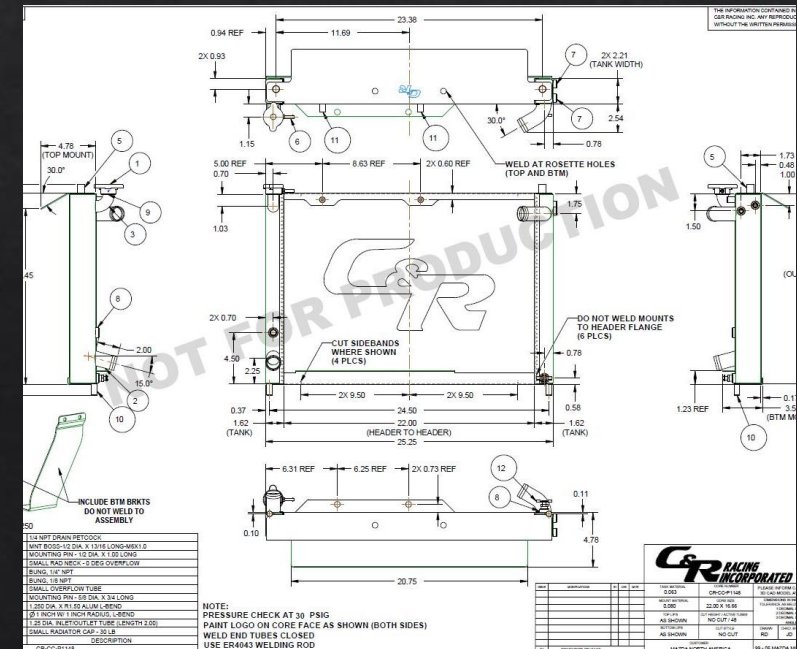
Price: \$750.00

Warehouse: Chicago



About:

- Exclusively sold by Mazda Motorsports
- Ideal for harsh racing conditions
- Triple pass design for maximum cooling
- Compatible with OEM hoses
- Two 1/8" NPT sensor locations
- One 1/4" NPT zinc anode
- Direct replacement for the stock radiator





Spec Miata Adjustable Timing Wheel

Part #: 0000-10-5100

Price: \$90.00

Warehouses: GA & Calif.

Redesigned from Mazda's other offering:

- Improved adjustment slots
- ARP hardware included
- 20 degrees of adjustment indicated
- Stainless steel construction
- Thicker than OEM wheel
- Coined to follow OEM design
- Exclusively sold by Mazda Motorsports





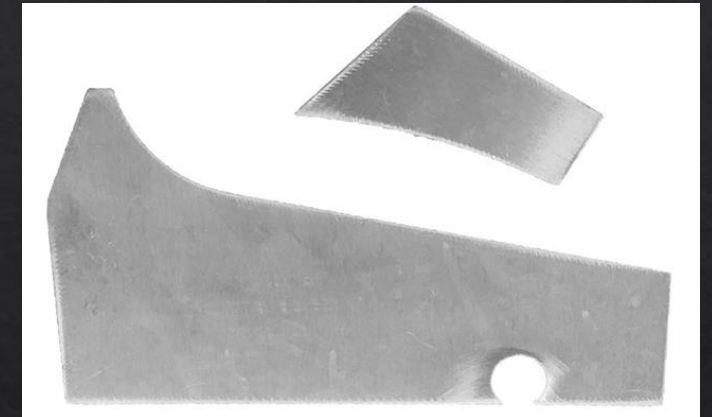
NA & NB Miata Differential Brace

Part #: 0000-02-5160-MC

Price: \$35.00

Warehouse: Calif.

Two-piece brace protects the differential housing in the event of contact





NA & NB Miata Transmission Rebuild Kit



Racer Price: \$528.55

Part #	Description	Unit Price	QTY
G501-17-265A	RING, SYNCH	\$21.75	2
M502-17-265C	RING, SYNCH	\$21.10	1
M503-17-402	SHIFT FORK	\$21.12	1
M501-17-404D	SHIFT FORK	\$24.41	1
M501-17-205	RING, RETAINING	\$1.84	1
F401-17-243C	KEY, SYNCH	\$2.88	9
F401-17-242A	SLEEVE, HUB	\$34.67	1
M503-17-242A	SLEEVE, HUB	\$46.54	1
M504-17-265C	RING, SYNCH	\$17.91	1
R506-17-26Y	RING, SYNCHRONIZER	\$62.58	1
W501-17-724	SPRING, SYNC	\$2.32	2
V501-17-725	RING, SYNC	\$17.86	1
8601-17-629	NUT, LOCK	\$17.90	1
M501-17-309	NUT, LOCK	\$9.19	1
F402-17-264	SPRING, SYNCH	\$2.03	2
G401-17-264	SPRING, SYNCH	\$2.54	2
M501-17-205	RING, RETAINING	\$1.84	1
0317-17-225	RING, SNAP	\$2.49	1
0839-17-305C	RING, RETAINING	\$2.69	1
0000-02-5722-SP	SPACER, TRANS SM 5SPD	\$51.00	1
FE50-16-225A	GASKET	\$2.32	1
H501-17-103	OIL SEAL	\$3.28	1
M507-17-335A	OIL SEAL	\$12.93	1
9930-61-600	CAP	\$1.95	1



Spec Miata Suspension Hardware Kit

Racer Price: \$317.10

Part #	Description	Unit Price	QTY
H001-28-333	Top shock mount nut	\$4.09	8
9YA1-01-201	Lower upright bolt	\$10.92	2
B001-39-037B	Common suspension nut	\$1.45	16
9978-01-270H	Rear lower shock bolt	\$4.20	2
9997-11-200	Lock washer for shock bolt	\$1.04	2
9YA1-81-001	Rear suspension bolt	\$3.40	6
8871-34-222	Rear suspension nut	\$4.37	6
NA80-28-66ZD	Rear eccentric bolt	\$4.33	4
NA80-28-473A	Rear eccentric washer	\$1.38	4
GJ21-33-042B	Axel nut rear	\$5.40	2
9975-61-030	Brake caliper bolt rear	\$2.45	4
9994-01-001	Rear sway bar nut	\$2.45	4
NA01-34-112	Front upper control arm bolt	\$12.05	2
9995-81-426	Front upper control arm lock washer	\$2.68	2
FB01-28-091A	Front upper control arm nut	\$4.75	2
NA80-28-66ZD	Front eccentric bolt	\$4.33	4
NA80-28-473A	Front eccentric washer	\$1.38	4
H266-28-312	Front lower balljoint bolt	\$4.97	2
9975-61-225H	Front lower balljoint bolt	\$2.09	2
9992-31-400	Front lower balljoint castle nut	\$2.90	2
9922-13-025	Front lower balljoint split pin	\$0.77	2
9YB1-31-204	Front upper balljoint castle nut	\$2.00	2
T060-26-169	Front upper balljoint split pin	\$0.87	2
GJ21-34-097A	Front lower shock bolt	\$5.25	2
9922-13-025	Front lower balljoint split pin	\$0.77	2
9YB1-31-204	Front upper balljoint castle nut	\$2.00	2
T060-26-169	Front upper balljoint split pin	\$0.87	2



PAGID Brake Pads: Spec Miata

Front Pad Set, Spec Miata *Sprint / Endurance*

- Part #: 0000-03-5102-T3
- Price: \$169.00

Rear Pad Set, Spec Miata *Sprint / Endurance*

- Part #: 0000-03-5112-T4
- Price: \$149.00

Front Pad Set, Spec Miata *Endurance*

- Part #: 0000-03-5102-29
- Price: \$189.00

Rear Pad Set, Spec Miata *Endurance*

- Part #: 0000-03-5112-29
- Price: \$169.00

Warehouses: GA & Calif.





PAGID Brake Pads Autocross/Street: ND Miata

Front Pad Set, ND with Wilwood Powerlite Calipers

- Part #: 0000-03-5106-R1
- Price: \$99.00

Front Pad Set, ND with non-Brembo Calipers

- Part #: 0000-03-5106-S3
- Price: \$149.40

Front Pad Set, ND with Brembo Calipers

- Part #: 0000-03-5106-S8
- Price: \$171.00

Rear Pad Set, ND/NC OE calipers

- Part #: 0000-03-5116-R1
- Price: \$129.60

Warehouses: GA & Calif.





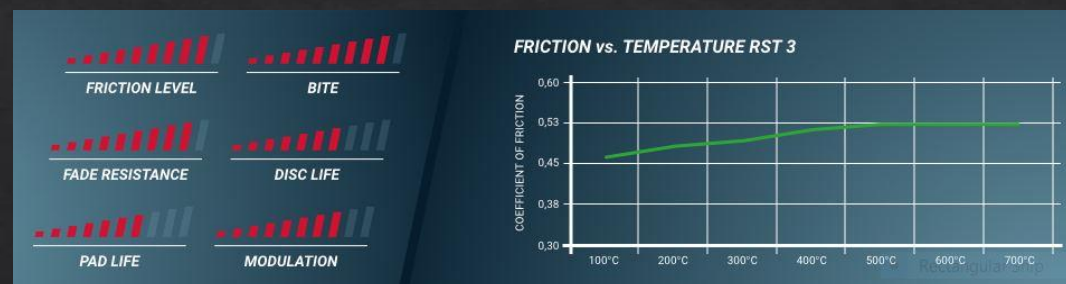
PAGID Brake Pads: NC Miata

Non-Spec MX-5 Pads

Warehouses: GA & Calif.

RST3 (Fronts)

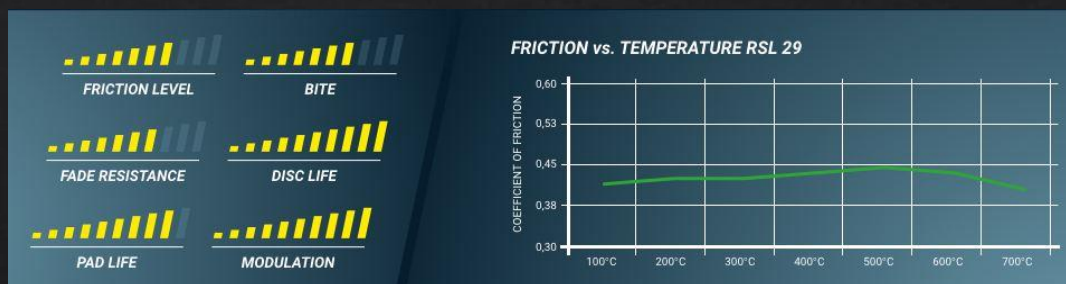
- Price: \$225.00 (price drop to \$150 effective as of Nov 12, 2019)
- Part #: 0000-03-5104-T3
- High friction coefficient / Good initial bite / Low heat conductivity / Excellent modulation & release characteristics



RST3

RSL29 (Options for fronts and/or rears)

- Fronts: Price: \$253.00 / Part #: 0000-03-5104-29 (price drop to \$175 effective as of Nov 12, 2019)
- Rears: \$225 / Part #: 0000-03-5114-29 (price drop to \$140 effective as of Nov 12, 2019)
- Both: Medium friction coefficient / Long pad & disc life / Easy bedding



RSL29



Spec MX-5 PAGID Brake Pads

NC MX-5 (third gen)

Sprints:

- Front: Part #: 0000-03-5104-SP; price: \$200.00*
- Rear: Part #: 0000-03-5114-SP; price: \$155.00*

Endurance:

- Front: 0000-03-5104-EN - \$220.00*
- Rear: 0000-03-5114-EN - \$189.75*

Features & benefits:

- Consistency
- Extended brake pad life - PAGID Racing employs dual retention systems for brake pads, with an adhesive bond and a patented mechanical system that consists of brass studs that are welded directly to the backplate that prevents the pad from de-laminating or breaking apart.
- Unparalleled performance - The high ceramic content in the pads allows for superior thermal insulation and higher heat resistance combined with low heat conductivity. The reduction in heat transfer to the caliper (up to 60 degrees Celsius) helps prevent the boiling of the fluid.

All of these help to minimize wear, maintains optimum bite, modulation and pedal feel, and extends the life of the components.



*Any Spec MX-5 competition part, if included in build or conversion kit, receives 20% off; most stock parts receive 25% off in kit



Spec MX-5 Engine Package

NC MX-5; Turnkey or Build Your Own - All Brand New Components

Two options:

- Turnkey engine (comes sealed; 0000-01-5015-KT): \$7,240.00*
- Components to build your own:
 - Roush CNC cylinder head (0000-01-5300): \$1,980.00*
 - MAHLE pistons standard (0000-01-5310-PN): \$460.00*
 - MAHLE pistons oversized (0000-01-5310-OS): \$460.00
 - Piston wrist pins (0000-01-5310-PN): \$27.00ea* (one of four)
 - AC delete pulley kit (OEM): call or log in for price
 - Gasket set (OEM): call or log in for price



*Any Spec MX-5 competition part, if included in build or conversion kit, receives 20% off; most stock parts receive 25% off in kit



Spec MX-5 Roush Cylinder Head

NC MX-5 (third gen)

Part #: 0000-01-5300

Price: \$1,980.00*

Features & benefits:

- Parity – tech-able
 - Tight machine tolerance
 - Consistent repeatable results
- Performance
 - Increased flow
 - Performance valve job
- Reliability



*Any Spec MX-5 competition part, if included in build or conversion kit, receives 20% off; most stock parts receive 25% off in kit



Spec MX-5 Mahle Pistons

NC MX-5 (3rd gen)

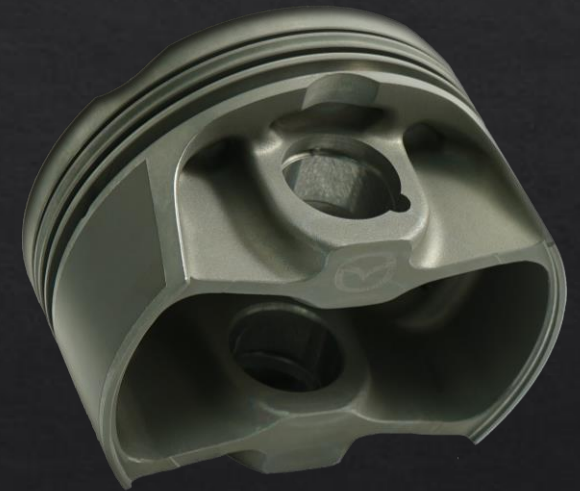
Standard: 0000-01-5310

Oversized: 0000-01-5210-OS

Each priced at \$460.00*

Features & benefits:

- Parity – tech-able
 - Key markings for tech inspection
- Performance
 - Domed piston for an increase in compression
 - Low tension ring pack
- Reliability
 - 4032 forged aluminum
 - Slipper skirt design



*Any Spec MX-5 competition part, if included in build or conversion kit, receives 20% off; most stock parts receive 25% off in kit



Spec MX-5 Suspension: Penske Racing Shocks & Eibach

NC Miata (third gen)

The Spec MX-5 suspension, w/ single-adjustable shocks, helps drivers develop their skills

Features & Benefits:

- Driver development opportunity & fun to drive - Lightweight, high-performance, racing damper with integral ride height adjustment
- Single adjuster with eight clicks to affect compression and rebound at the same time for balanced changes
 - Wide range of adjustments to cover all setup options (high grip, low grip, bumpy track, rain)
 - Front/rear adjustments allow for the balance of the car to be tailored to each track
 - Easy locking ride-height system
- Custom tender spring isolation system provides a solid base for the tender spring in the rear. Eliminates issues with damage caused by misalignment
- Rear upper mount spherical bearing corrects misalignment to avoid damage and wear. Also, isolates bump rubber loads into the mount
- Anti-tamper stickers and custom inflation methods protect the series from non-compliant changes to the internal valving
- Spec Eibach springs & sway bars



*Any Spec MX-5 competition part, if included in build or conversion kit, receives 20% off; most stock parts receive 25% off in kit



Spec MX-5 Fuel Rail

NC MX-5 (third gen)

Part #: 0000-06-5207

Price: \$344.00*

Warehouse: Calif.

Features & benefits:

- Tech-able - fuel pressure gauge
- Integrated fuel sampling port
- Comes with pump hose



*Any Spec MX-5 competition part, if included in build or conversion kit, receives 20% off; most stock parts receive 25% off in kit



Spec MX-5: C&R Advanced Cooling Technology Radiator & Oil Cooler

NC MX-5 (third gen)

Assembly: 0000-01-5504-CR - \$1,246.00* / Oil Cooler Adapter & Lines: 0000-01-5511-KT - \$549.00*

Warehouse: Calif.

Features & benefits:

- Direct replacement for the stock radiator
- Uses factory brackets
- Proper cooling package for tight spec racing - uses its proprietary extruded tube race core and fin design that has been tweaked for maximum cooling in the NC MX-5, which includes the Spec MX-5
- Integrated oil cooler to combat extreme temperatures – air-to-oil cooler for maximum thermal efficiency
- Integrated power steering cooling loop mount

*Any Spec MX-5 competition part, if included in build or conversion kit, receives 20% off; most stock parts receive 25% off in kit



Spec MX-5 Exhaust by Kooks Headers & Exhaust

NC Miata (third gen)

Header: 0000-06-5407-NC; price: \$501.00

Exhaust: 0000-06-5427-NC; price: **\$496.00**

Warehouse: GA

Features & benefits:

- Installation of the full system, from the header to the exhaust tip, should be easy
- The lightweight stainless-steel exhaust uses the MX-5's stock hanger locations, replacing the catalytic converter
- As an exhaust, it should meet the sound requirements at even at the strictest of race tracks
- It should perform consistently across the package. Kooks has ensured this with a free-flowing muffler, and its years of experience ensures that the mandrel bends in the system are consistent across every manufactured part
- There's no wondering if your competitor's exhaust may be better than yours – essential for the “spec” element of the car

*Any Spec MX-5 competition part, if included in build or conversion kit, receives 20% off; most stock parts receive 25% off in kit



Polycarbonate Windshield

ND MX-5 (4th gen Miata)

The polycarbonate windshield with four tear-offs

- Part #: 0000-07-5116-PT
- Price: \$965.00

The mounting brackets

- Part #: 0000-07-5116-BR
- Price: \$370.00

Warehouse: GA





EGMT 5-Speed Transmission

New dog box transmission replaces the much-loved PBS, with many EGMT parts compatible with both. Transmission works with rotaries and, with some modifications, Miatas as well.

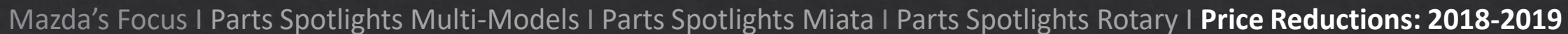
Part #: 0000-02-9001-EM

Price: \$9,980.00

(If a Miata vehicle, Mazda will discount \$500 as Miata drivers will need to modify bellhousing. Call 800.435.2508 to order.)

Note: Many spare parts for the PBS were also manufactured. Call for info.



[illegible]



Price Drop: Stock Parts

Part #	Product Name	Model	First Model Year	Last Model Year
8DN1-10-271	GASKET SET,ENG.	MIATA	1990	1993
8DN2-10-271	GASKET SET,ENG.	MIATA	1994	1997
8DN3-10-271	GASKET SET,ENGINE	MIATA	1999	2000
B660-14-100E	PUMP, OIL	MIATA, PROTEGE	1988	1992
B660-15-010E-XX	S WATER PUMP	MIATA	1990	1993
B6S8-14-100J	PUMP,OIL-NEED 993071000	MIATA, PROTEGE	1995	1997
BP05-12-121A	VALVE, EXH	MIATA, PROTEGE	1990	1997
BP4W-15-025	FAN, ELECTRIC	MIATA	1999	2005
BP6D-14-100	PUMP,OIL	MIATA	2001	2005
BPZ0-11-SD0B	RING SET, PISTON	MIATA	1999	2005
M505-17-221E	SHAFT, MAIN	MIATA, MAZDA6	2001	2006
M516-17-201B	GEAR, MAIN	MIATA	1990	2005
M536-17-301A	GEAR, COUNTER SHAFT 5-SPEED NA/NB	MIATA	1999	2015
MF04-25-100A	SHAFT, PROPELLER-FRT	MIATA	1994	2005
MM03-27-200	DIFFERENTIAL	MIATA	1997	2003
NE512-62-40A	FLANGE, REAR AXLE	MIATA	2006	2015



Price Drop: Stock Parts

Part #	Product Name	Model	First Model Year	Last Model Year
8DN1-10-271A	GASKET SET, ENG.	MIATA	1991	1993
8DN5-10-271	GASKET SET, ENGINE	MIATA	2001	2003
B6Y4-11-SC0B	RING SET, PISTON	MIATA	1990	1993
B6Y4-11-SD0B	RING SET, PISTON	MIATA	1990	1993
B6Z1-10-280	GUIDE, VALVE	PROTEGE	1990	2005
BP4W-12-121	VALVE, EXHAUST	MIATA, PROTEGE	1997	2002
BP6F-12-121	VALVE, EXHAUST	MIATA	2001	2005
BPY0-10-290	GUIDE, VALVE	PROTEGE	1990	2005
BPY1-11-SC0	RING SET, PISTON	MIATA, PROTEGE	1990	1997
BPY1-11-SD0	RING SET, PISTON	MIATA, PROTEGE	1990	1997
BPZ0-11-SC0B	RING SET, PISTON	MIATA, PROTEGE	1997	2005
NAY1-52-110	PANEL RT, FENDER FRONT	MIATA	1990	1997
NAY1-52-210	PANEL LT, FENDER FRONT	MIATA	1990	1997
NC10-26-112B	HUB(R), SUPPORT	MIATA	1999	2005
NC10-26-122B	HUB (L), SUPPORT	MIATA	1999	2005
NC14-26-112B	HUB(R), SUPPORT	MIATA	1999	2005
NC14-26-122B	HUB (L), SUPPORT	MIATA	1999	2005
NCY0-52-110F	PANEL RIGHT, FENDER FRONT	MIATA	1999	2005
NCY0-52-210F	PANEL LEFT, FENDER FRONT	MIATA	1999	2005



'01 Miata Full Engine (0.010")

Kit #: 0000-01-5401-10
Old Price: \$880.94
New Price: \$776.89

Part #	Product Name	QTY
8DN5-10-271	FULL GASKET KIT	1
KLK4-12-603	CAMSHAFT SEAL, REAR	1
9954-10-0906	DIP STICK O-RING	1
KL01-14-702A	O-RING, OIL COOLER	1
B630-10-306	DOWL PINS	2
B6S7-11-214A	ROD BOLT	8
B6S7-11-215A	ROD NUTS	8
BPZ0-11-SB0	PISTON	4
BPZ0-11-SD0B	RING SET	1
BP6D-14-100	OIL PUMP	1
FE1H-14-122B	O-RING, OIL PUMP	1
9930-71-000	PLUG, HOLE	1
B6BF-15-010F	WATER, PUMP	1
B6S0-12-207 MV	TIMING BELT KIT	1

'01 Miata Full Engine

Kit #: 0000-01-5401-ST
Old Price: \$1,047.42
New Price: \$909.57

Part #	Product Name	QTY
8DN5-10-271	FULL GASKET KIT	1
KLK4-12-603	CAMSHAFT SEAL, REAR	1
9954-10-0906	DIP STICK O-RING	1
KL01-14-702A	O-RING, OIL COOLER	1
B630-10-306	DOWL PINS	2
B6S7-11-214A	ROD BOLT	8
B6S7-11-215A	ROD NUTS	8
BPZ0-11-SA0	PISTON	4
BPZ0-11-SC0B	RING SET	1
BP6D-14-100	OIL PUMP	1
FE1H-14-122B	O-RING, OIL PUMP	1
9930-71-000	PLUG, HOLE	1
B6BF-15-010F	WATER, PUMP	1
B6S0-12-207 MV	TIMING BELT KIT	1

To see individual stock parts pricing, please log in to your racer account at MazdaMotorsports.com via the parts store



'99 Miata Full Engine (0.010")

Kit #: 0000-01-5499-10
 Old Price: \$830.38
 New Price: \$739.09

Part #	Product Name	QTY
8DN3-10-271	FULL GASKET KIT	1
KLG4-12-603	CAMSHAFT SEAL, REAR	1
9954-10-0906	DIP STICK O-RING	1
KL01-14-702A	O-RING, OIL COOLER	1
B630-10-306	DOWL PINS	2
B6S7-11-214A	ROD BOLT	8
B6S7-11-215A	ROD NUTS	8
BPZ0-11-SB0	PISTON	4
BPZ0-11-SD0B	RING SET	1
BP4W-14-100A	OIL PUMP	1
FE1H-14-122B	O-RING, OIL PUMP	1
9930-71-000	PLUG, HOLE	1
B6BF-15-010F	WATER, PUMP	1
B6S0-12-207 MV	TIMING BELT KIT	1

'99 Miata Full Engine

Kit #: 0000-01-5499-ST
 Old Price: \$872.26
 New Price: \$747.41



Part #	Product Name	QTY
8DN3-10-271	FULL GASKET KIT	1
KLG4-12-603	CAMSHAFT SEAL, REAR	1
9954-10-0906	DIP STICK O-RING	1
KL01-14-702A	O-RING, OIL COOLER	1
B630-10-306	DOWL PINS	2
B6S7-11-214A	ROD BOLT	8
B6S7-11-215A	ROD NUTS	8
BPZ0-11-SA0	PISTON	4
BPZ0-11-SC0B	RING SET	1
BP4W-14-100A	OIL PUMP	1
FE1H-14-122B	O-RING, OIL PUMP	1
9930-71-000	PLUG, HOLE	1
B6BF-15-010F	WATER, PUMP	1
B6S0-12-207 MV	TIMING BELT KIT	1

To see individual stock parts pricing, please log in to your racer account at [MazdaMotorsports.com](https://www.mazdamotorsports.com) via the parts store



'94 -'97 Miata Full Engine (0.010")

Kit #: 0000-01-5418-10
 Old Price: \$923.04
 New Price: \$763.77

Part #	Product Name	QTY
8DN2-10-271	FULL GASKET KIT	1
9954-10-3801	O-RING, CAM ANGLE SENSOR	1
9954-10-0906	DIP STICK O-RING	1
KL01-14-702A	O-RING, OIL COOLER	1
B630-10-306	DOWL PINS	2
B6S7-11-214A	ROD BOLT	8
B6S7-11-215A	ROD NUTS	8
BPZ0-11-SB0A	PISTON	4
BPZ0-11-SD0	RING SET	1
BP4W-14-100J	OIL PUMP	1
FE1H-14-122B	O-RING, OIL PUMP	1
9930-71-000	PLUG, HOLE	1
B6BF-15-010F	WATER, PUMP	1
B6S0-12-207 MV	TIMING BELT KIT	1

'94 -'97 Miata Full Engine

Kit #: 0000-01-5418-ST
 Old Price: \$914.30
 New Price: \$765.13



Part #	Product Name	QTY
8DN2-10-271	FULL GASKET KIT	1
9954-10-3801	O-RING, CAM ANGLE SENSOR	1
9954-10-0906	DIP STICK O-RING	1
KL01-14-702A	O-RING, OIL COOLER	1
B630-10-306	DOWL PINS	2
B6S7-11-214A	ROD BOLT	8
B6S7-11-215A	ROD NUTS	8
BPZ0-11-SA0A	PISTON	4
BPZ0-11-SC0	RING SET	1
BP4W-14-100J	OIL PUMP	1
FE1H-14-122B	O-RING, OIL PUMP	1
9930-71-000	PLUG, HOLE	1
B6BF-15-010F	WATER, PUMP	1
B6S0-12-207 MV	TIMING BELT KIT	1

To see individual stock parts pricing, please log in to your racer account at [MazdaMotorsports.com](https://www.mazdamotorsports.com) via the parts store



'90-'93 Miata Full Engine(0.010")

Kit #: 0000-01-5416-10

Old Price: \$972.73

New Price: \$821.17

Part #	Product Name	QTY
8DN2-10-271A	FULL GASKET KIT	1
9954-10-3801	O-RING, CAM ANGLE SENSOR	1
B61P-15-106A	HEAD O-RING	1
B630-10-306	DOWL PINS	2
B6S7-11-214A	ROD BOLT	8
B6S7-11-215A	ROD NUTS	8
BPZ0-11-SB0C	PISTON	4
BPZ0-11-SD0B	RING SET	1
BP4W-14-100C	OIL PUMP	1
B621-14-248	GASKET, OIL PUMP	1
9930-71-000	PLUG, HOLE	1
B660-15-010E-XX	WATER, PUMP	1
B6S0-12-207 MV	TIMING BELT KIT	1

'90-'93 Miata Full Engine

Kit #: 0000-01-5416-ST

Old Price: \$969.34

New Price: \$819.13

Part #	Product Name	QTY
8DN1-10-271A	FULL GASKET KIT	1
9954-10-3801	O-RING, CAM ANGLE SENSOR	1
B61P-15-106A	HEAD O-RING	1
B630-10-306	DOWL PINS	2
B6S7-11-214A	ROD BOLT	8
B6S7-11-215A	ROD NUTS	8
BPZ0-11-SA0C	PISTON	4
BPZ0-11-SC0B	RING SET	1
BP4W-14-100C	OIL PUMP	1
B621-14-248	GASKET, OIL PUMP	1
9930-71-000	PLUG, HOLE	1
B660-15-010E-XX	WATER, PUMP	1
B6S0-12-207 MV	TIMING BELT KIT	1

To see individual stock parts pricing, please log in to your racer account at MazdaMotorsports.com via the parts store



220 Competition Parts Reduced in Price

Some that were featured:

- **Bilstein Shock (front) / Part #: 0000-04-5225-BL**
Old Price: \$105.00 / Reduced Price: \$99.75
- Bilstein Shock (rear) / Part #: 0000-04-5226-BL
Old Price: \$105.00 / Reduced Price: \$97.75
- NGK Spark Plugs / Part #: 0000-10-R115
Old Price: \$33.50 / Reduced Price: \$29.00
- NGK Spark Plugs / Part #: 0000-10-R11
Old Price: \$33.50 / Reduced Racer Price: \$29.00
- **Automotive Racing Products, Wheel Stud Kit (rear) / Part #: 0000-04-5720**
Old Price: \$29.25 / Reduced Price: \$25.50
- **Miata Coilover Shock Kit by Jesse Prather Motorsports / Part # 0000-04-5229**
Old Price: \$3,100.00 / Reduced Price: \$2,749.00



Mazda's Focus | Parts Spotlights Multi-Models | Parts Spotlights Miata | Parts Spotlights Rotary | **Price Reductions: 2018-2019**

Spec Miata 5-Speed Transmission

Part #: M52P-03-000

1990-2005 Miata

Call 800.435.2508 or log in for price



More to Come in 2019

Mazda Motorsports Thanks You for Racing a Mazda!